

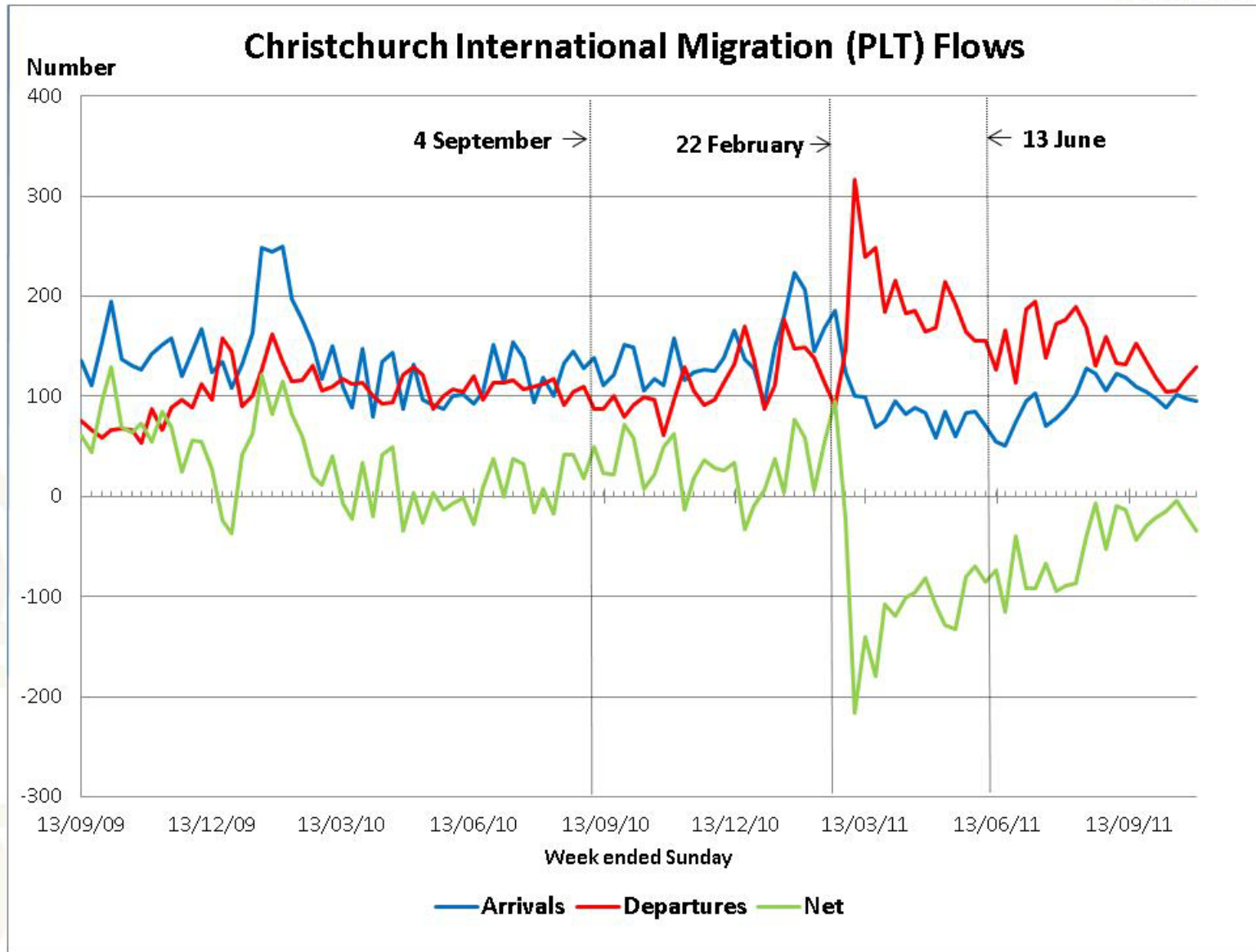
International migration to/from Christchurch after the earthquakes

Peter Lafferty

29 November 2011

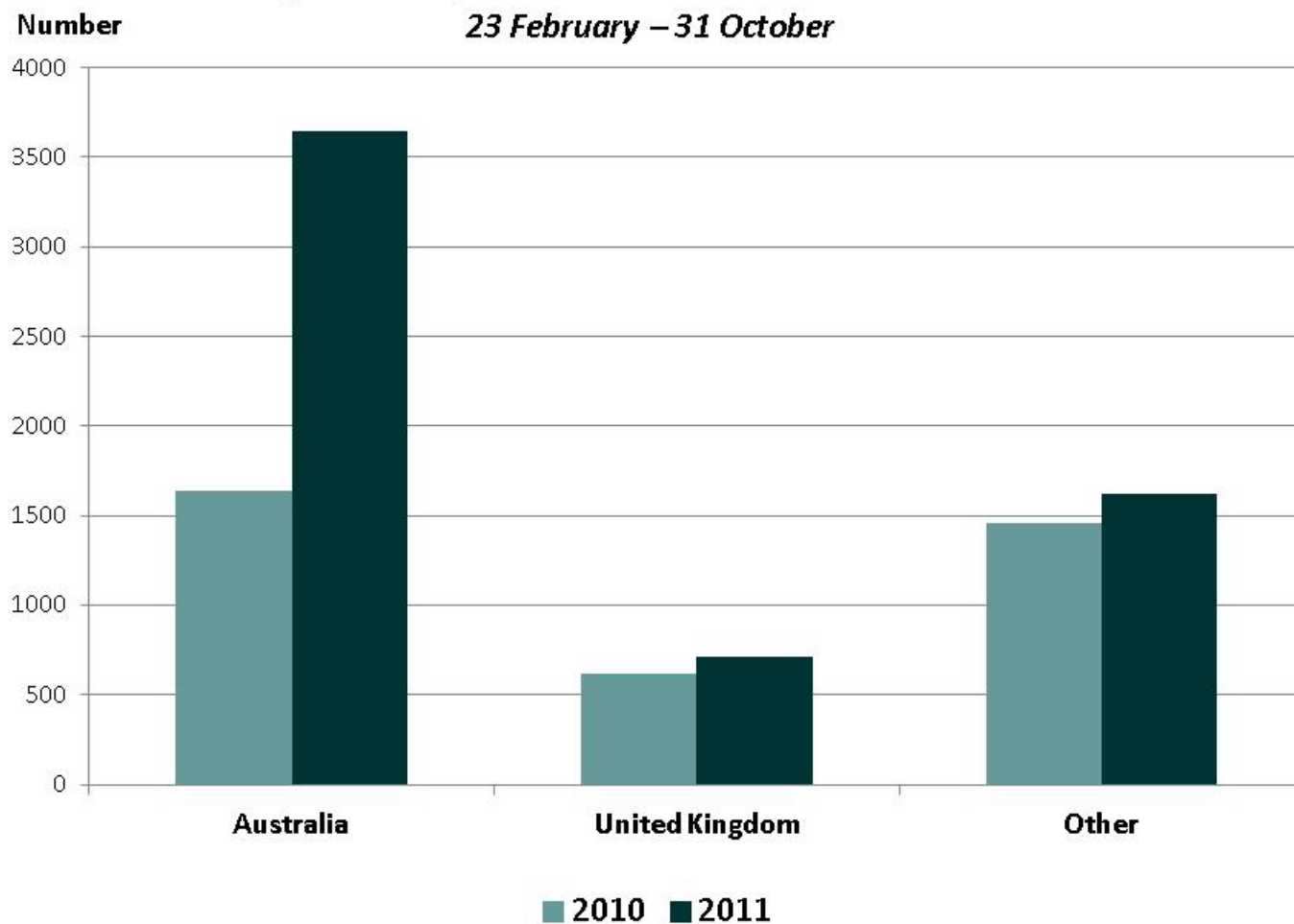
Speech contents

- Overview of Christchurch international migration flows after recent earthquakes
- Where are they going?
- What age and sex structure do they have?
- What are the occupations?
- Summary
- Questions.

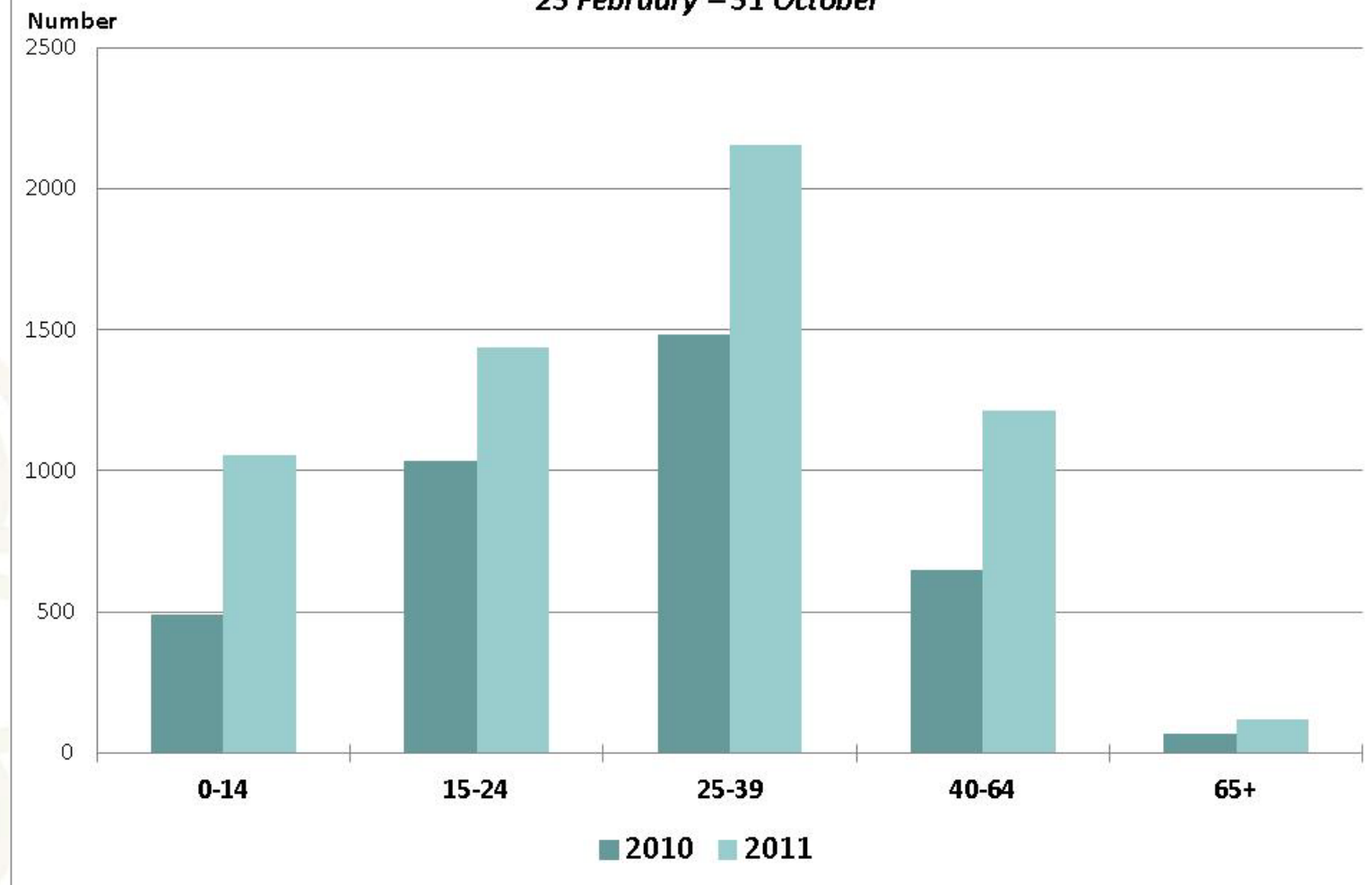


Christchurch International Departures by Country of Next Permanent Residence

23 February – 31 October

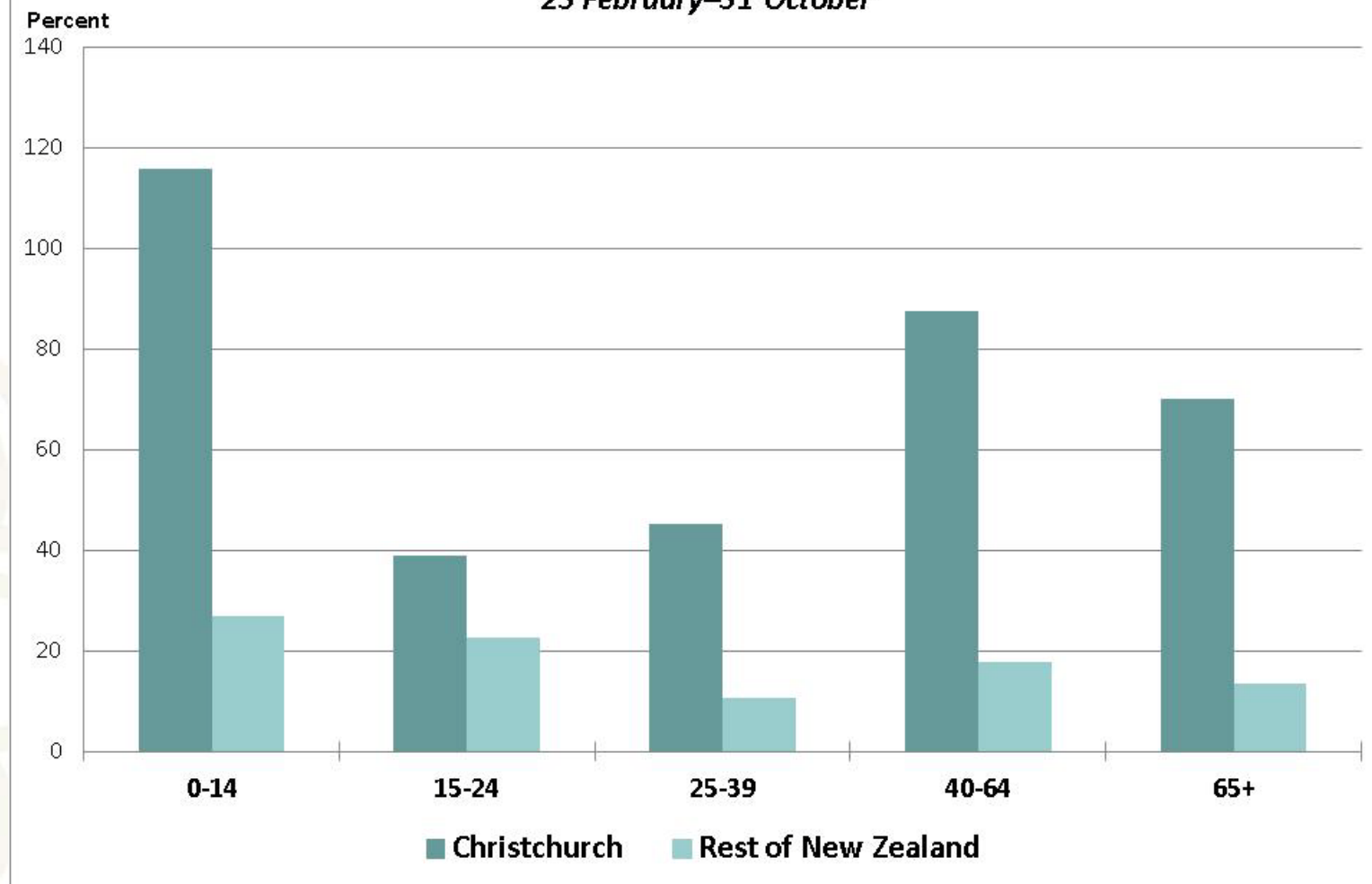


Christchurch International Migration Departures by Broad Age Group 23 February – 31 October

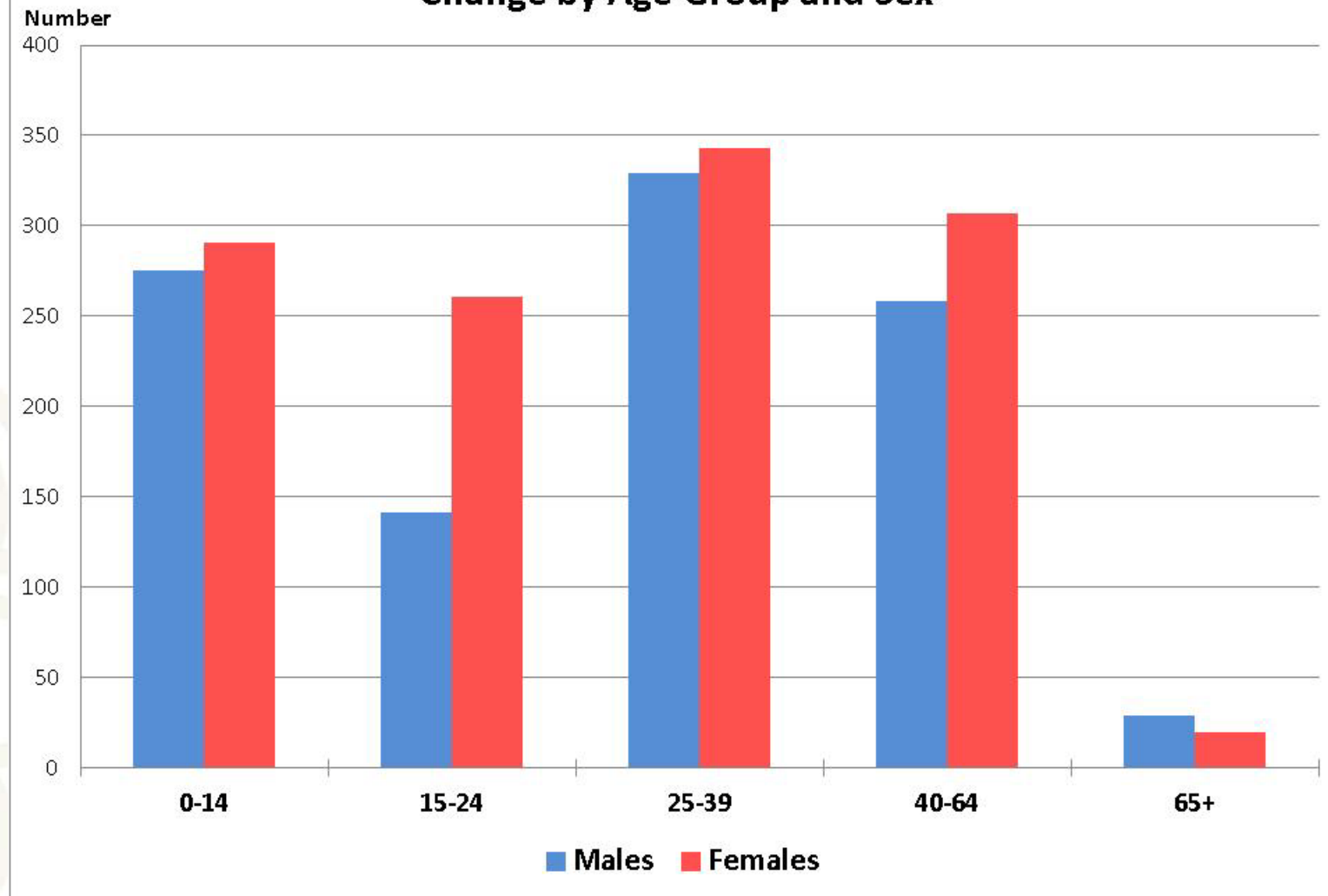


Christchurch International Migration Departures Change by Broad Age Group

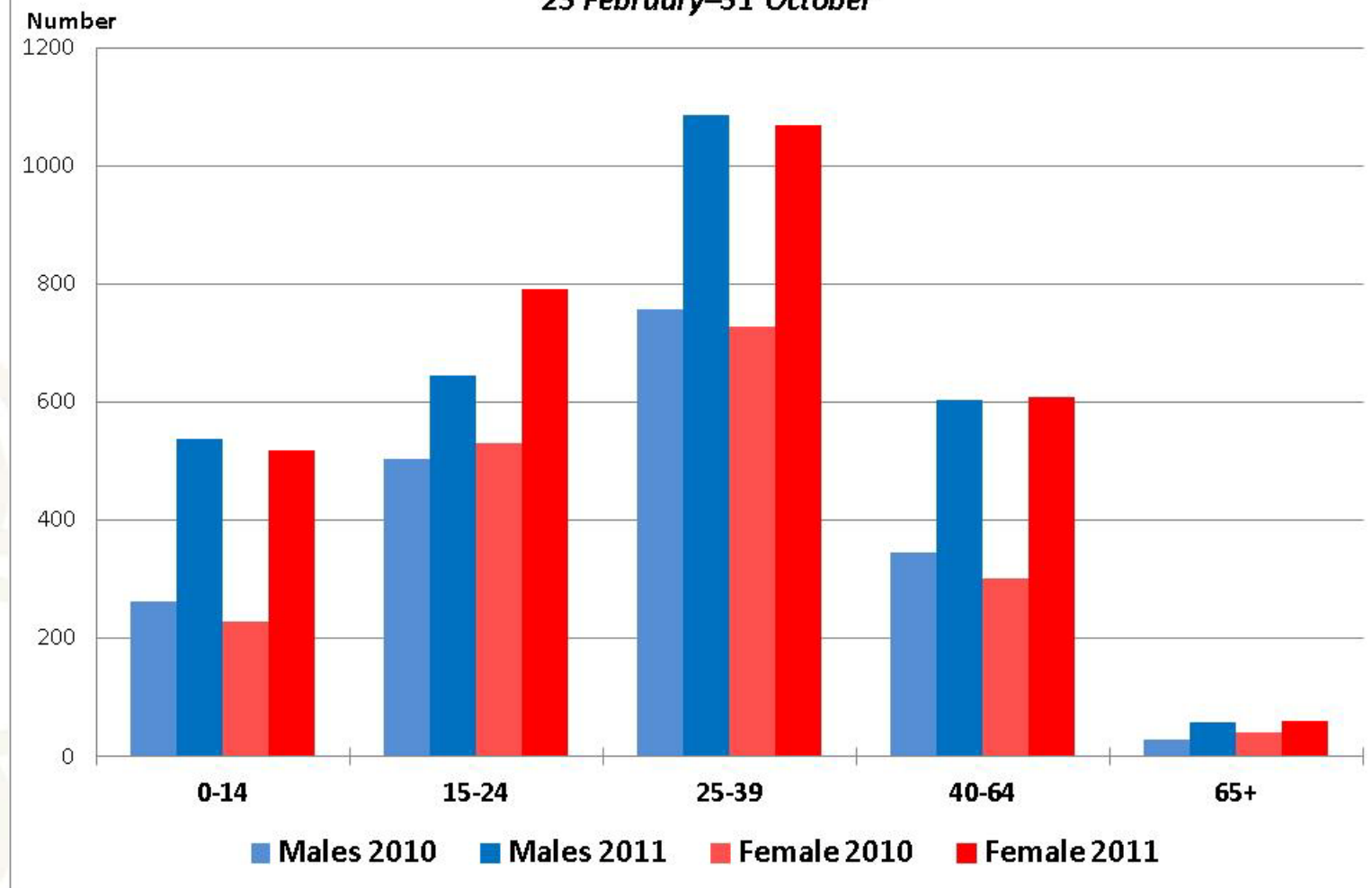
23 February–31 October



Christchurch International Departures Change by Age Group and Sex

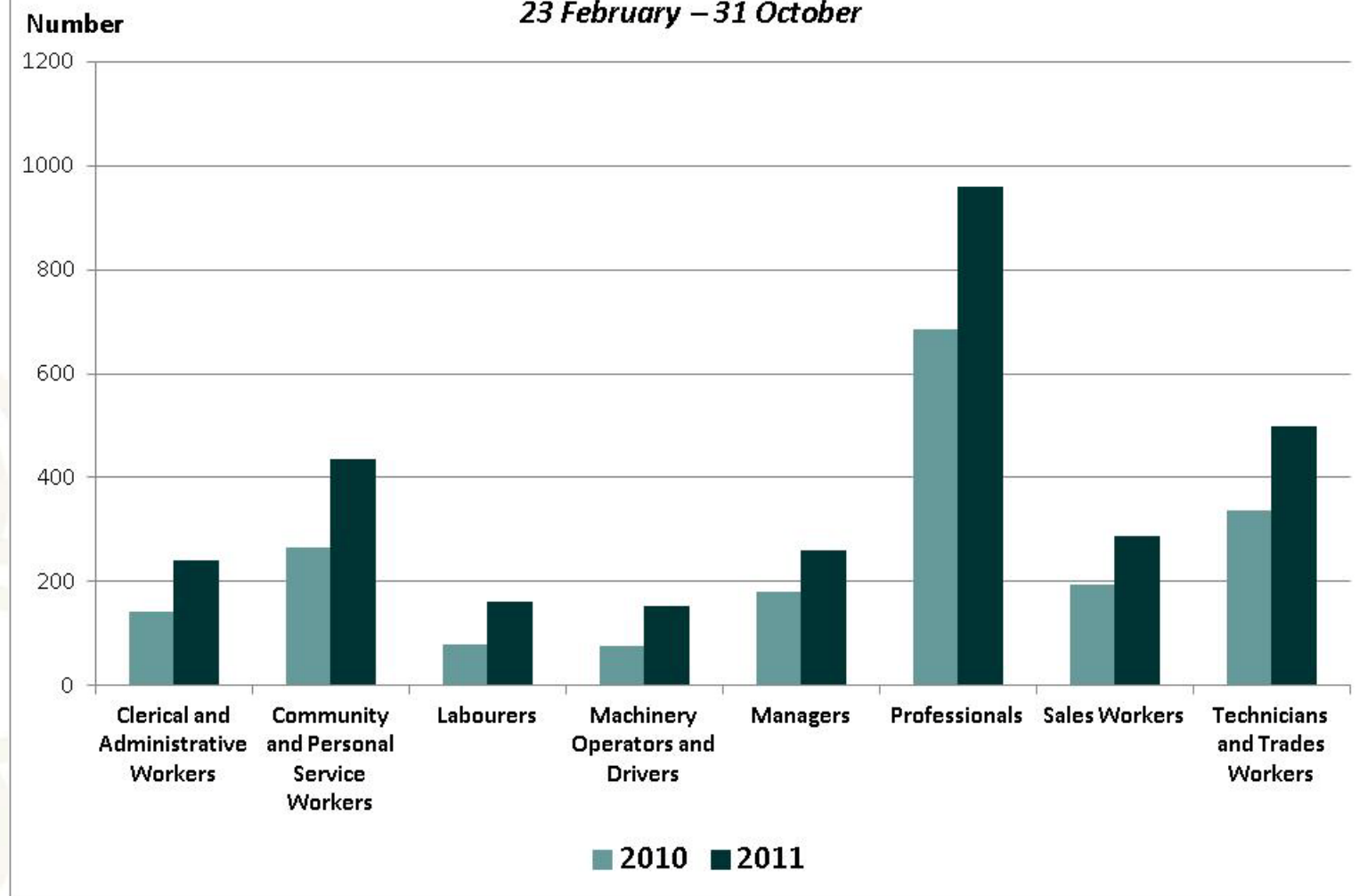


Christchurch International Migration Departures by Broad Age Group 23 February–31 October



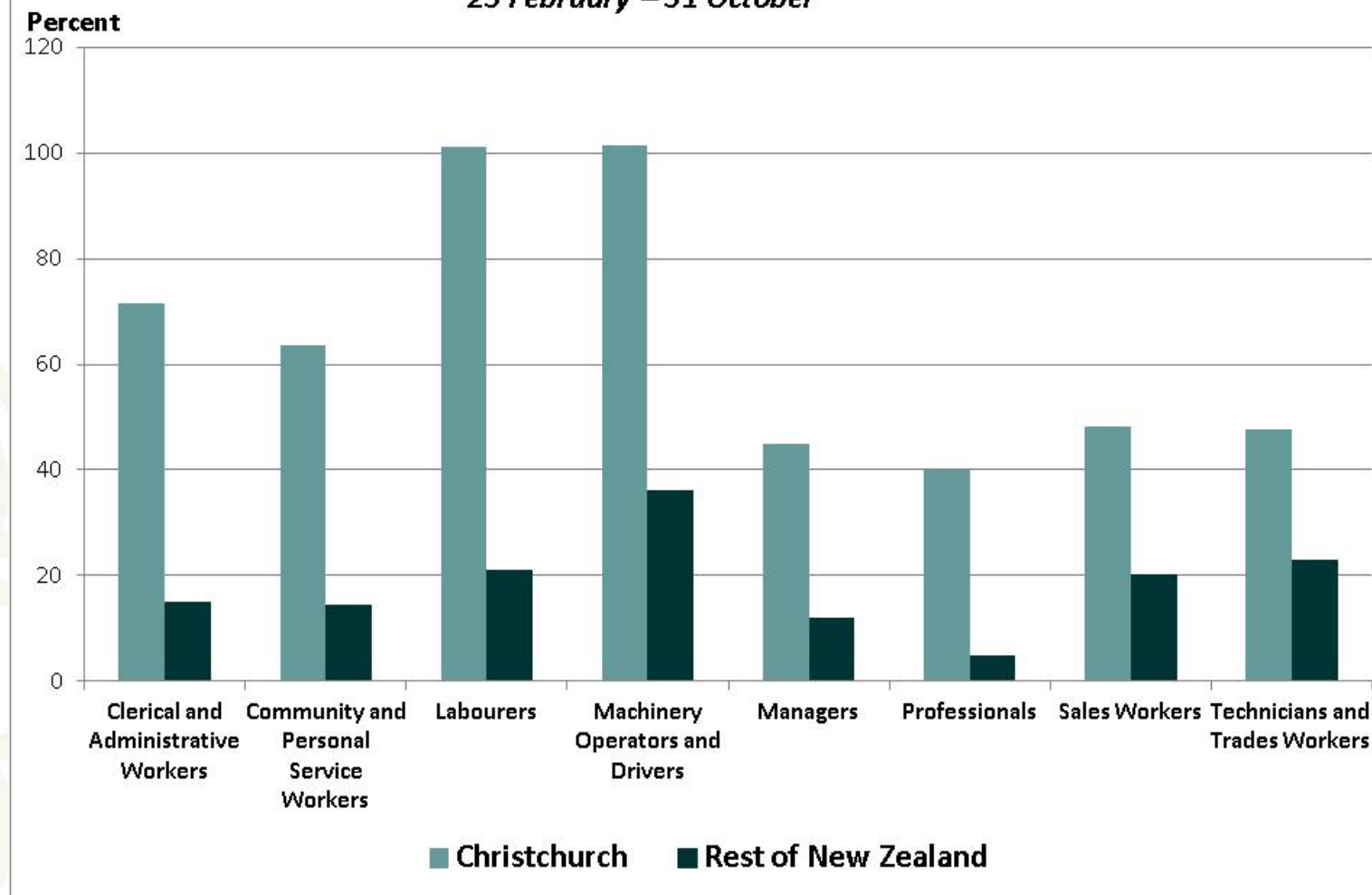
Christchurch International Departures by Broad Occupation Group

23 February – 31 October



International Departures Change by Broad Occupation Group

23 February – 31 October



Summary

- Shockwave impact of earthquakes on Christchurch migration
- Australia main departure destination
- Change in departures more obvious for females
- All occupation groups affected – percentage change for Christchurch more obvious for labourers, machine operators and drivers
- Long term trend is unknown.

www.stats.govt.nz/Infoshare

QUESTIONS?